

Leelah

**SELF
STRUCTURE**



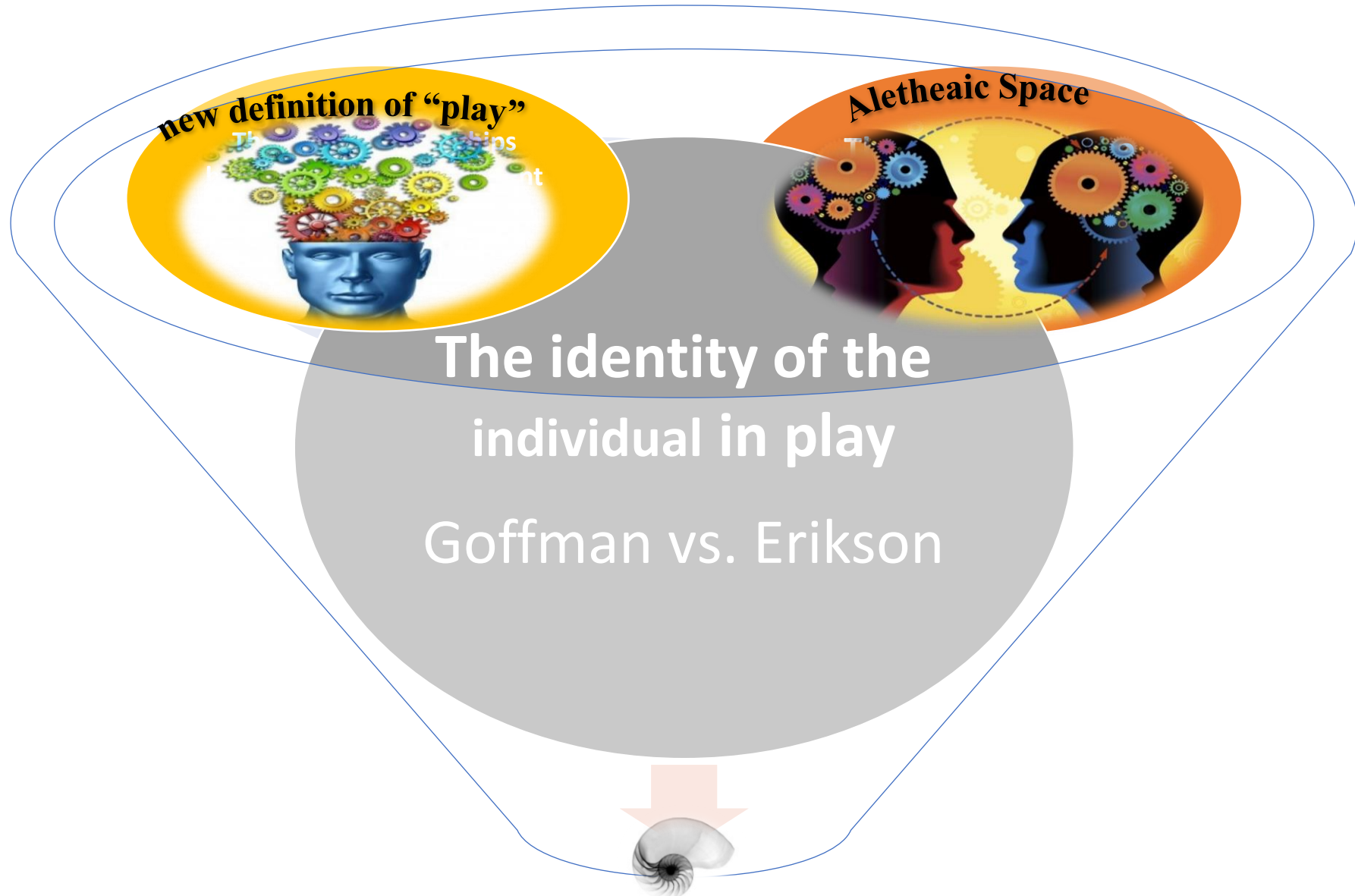


“Questioning the reality of the self is quit a challenge” (pp.17)

Pitruzzella, s. (2016). Drama, Creativity, and Intersubjectivity. N.Y.: Routledge

 **INDIVIDUAL**

Third Pillar

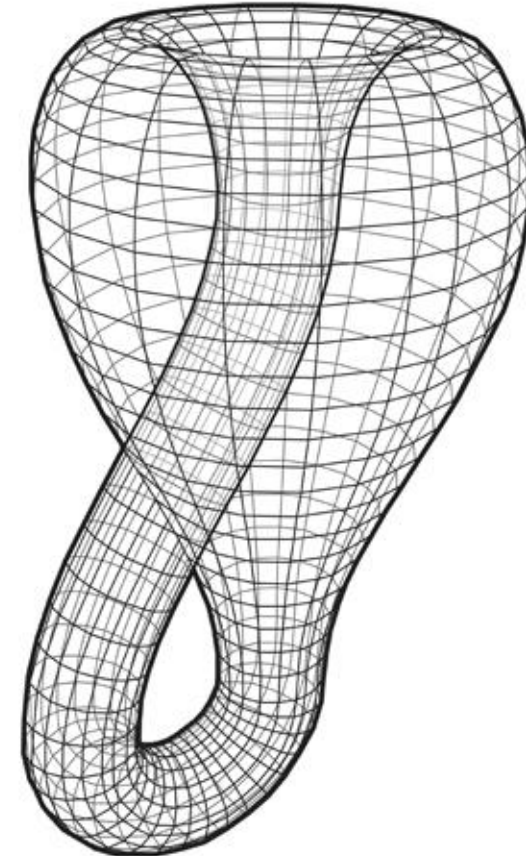
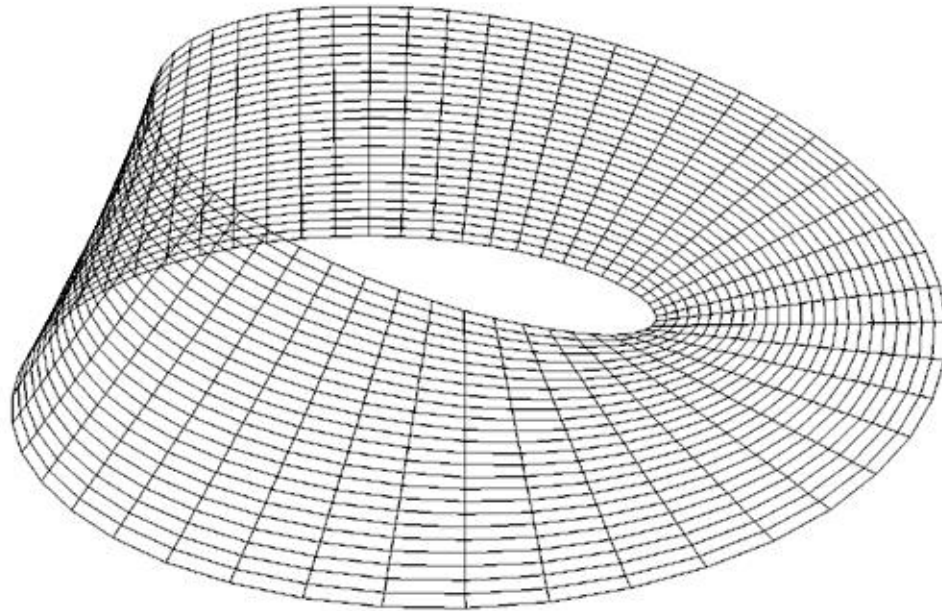


- Erikson, E. H. (1993). *Childhood and society*. WW Norton & Company. The Leelah Play Paradigm
- Goffman, E. (1978). *The presentation of self in everyday life* (p. 56). Harmondsworth.

Topology

Human subjectivity/self and the structure of a topological space

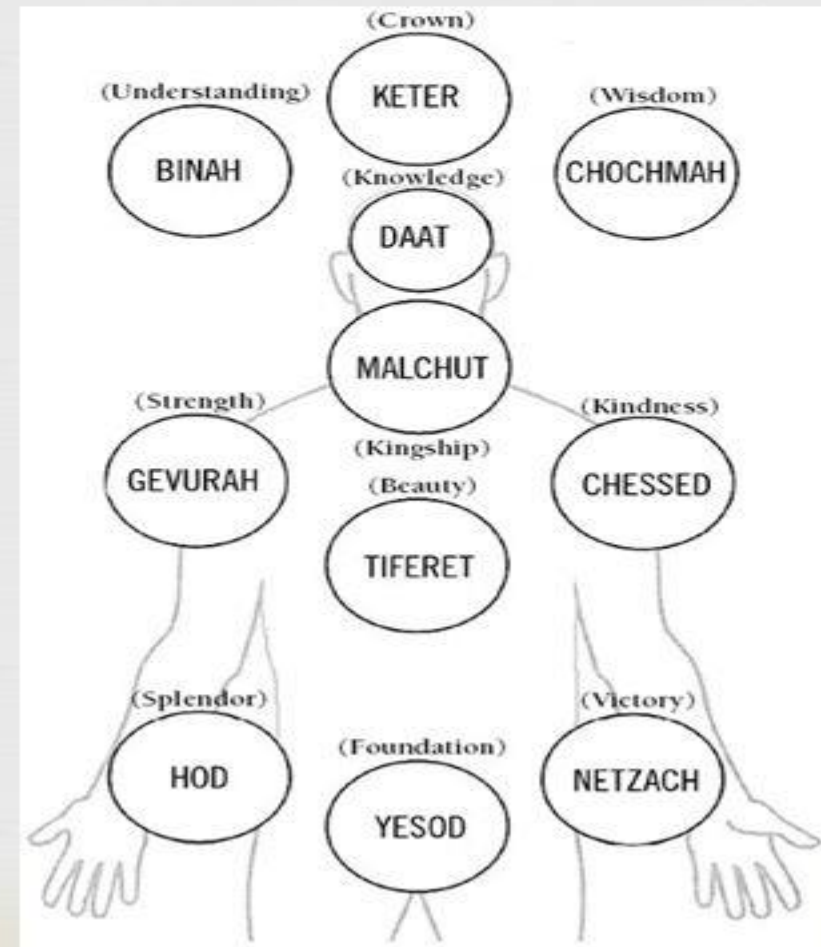
The object of therapy is the emotional foundation/the self structure



The Concept of the 10 Sefirot

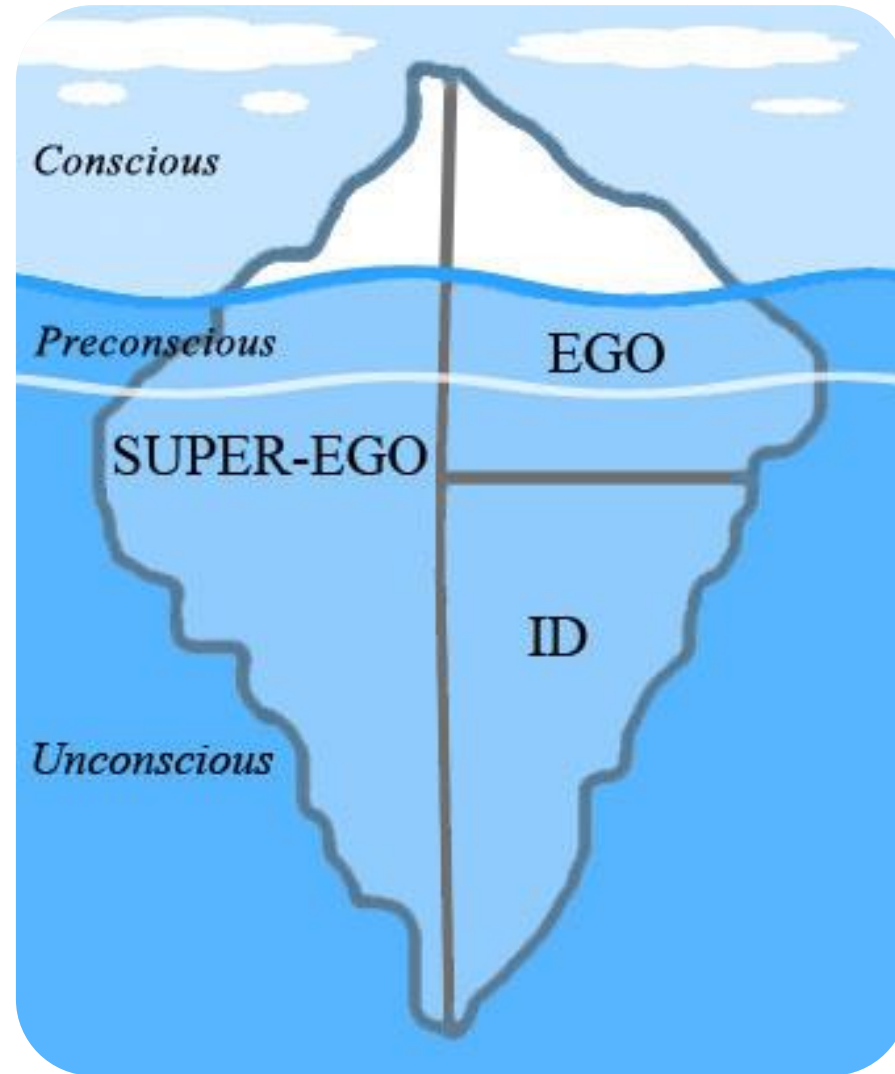
Kabbalah

- ☞ - tzimtzum – withdrawal of God
- sefirot – emanations of the divine attributes of God
- destruction of vessels
- division of the Universe
- tikkun olam – repairing the world

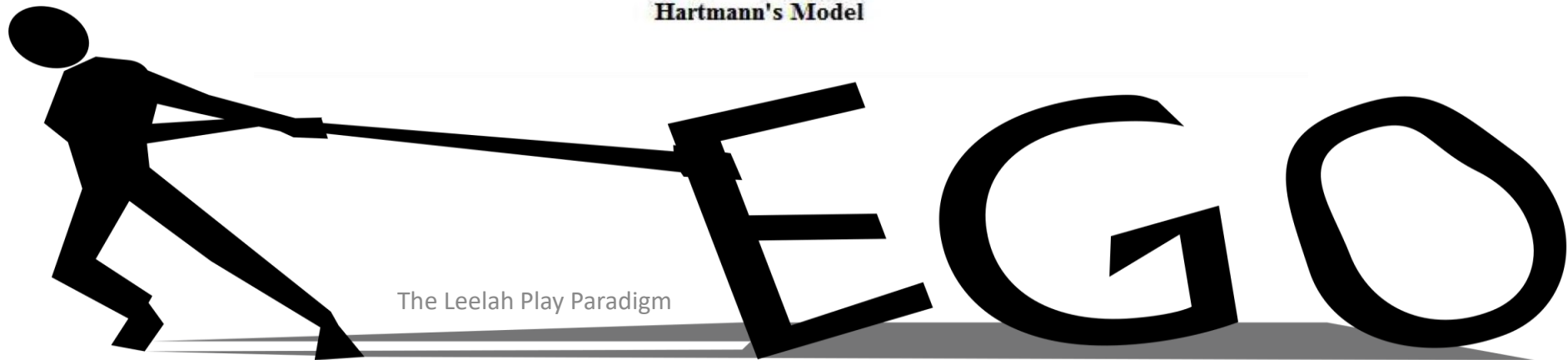
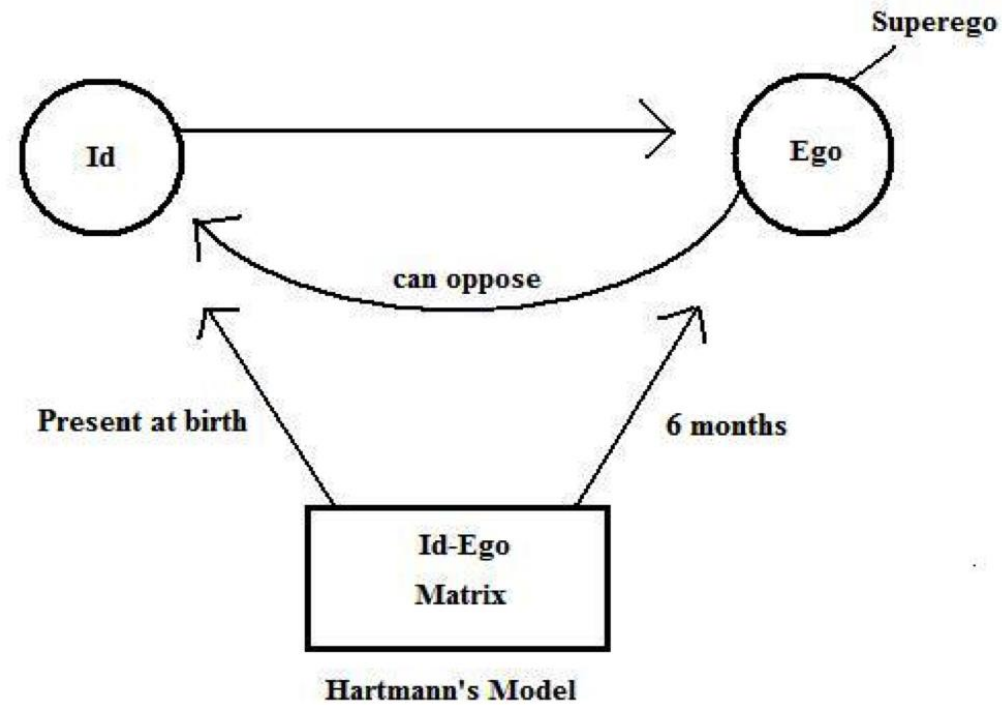


Freud topographical & structural model

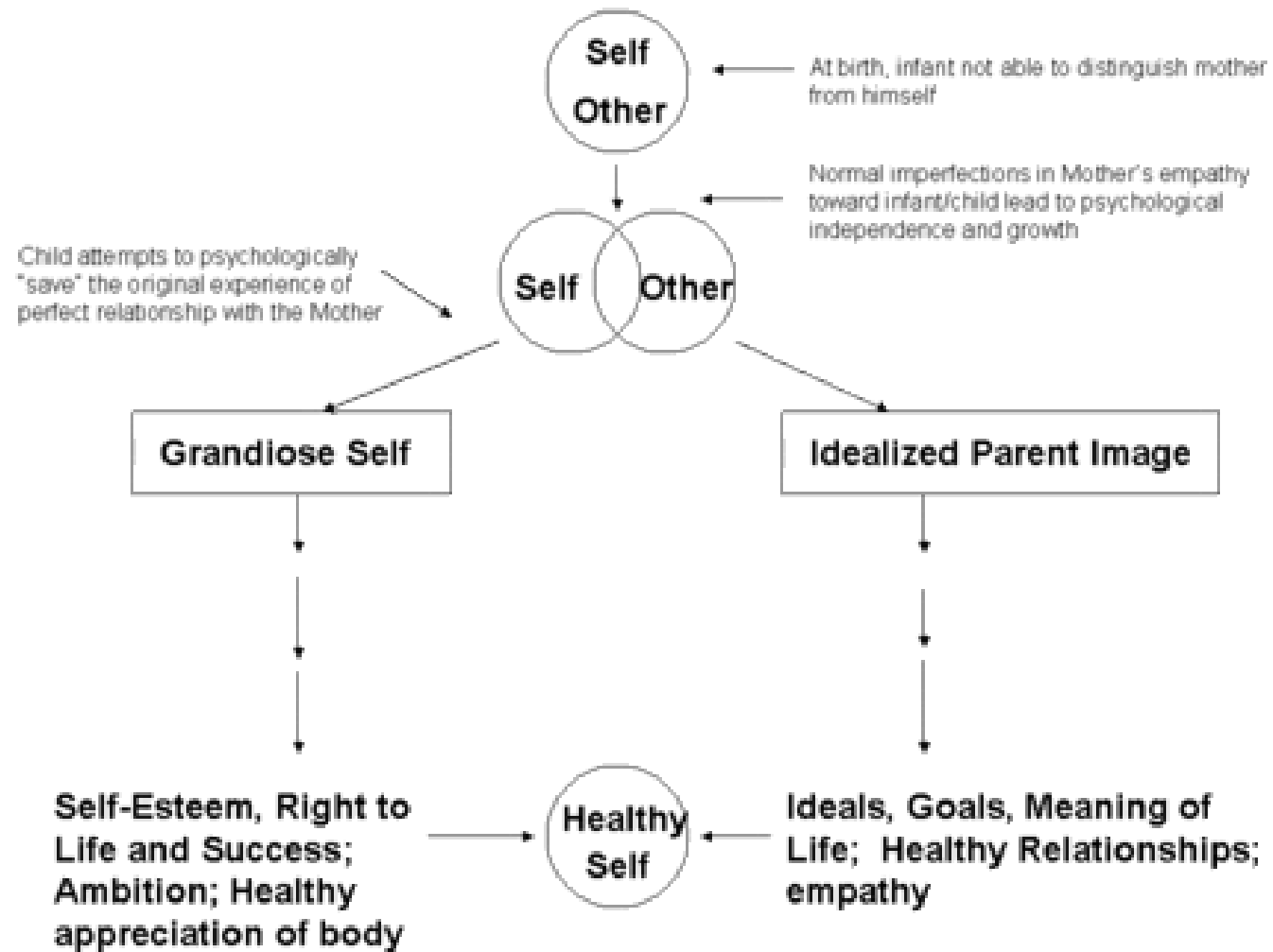
Topography of Mind: Iceberg Model



Ego Psychology Heinz Hartmann

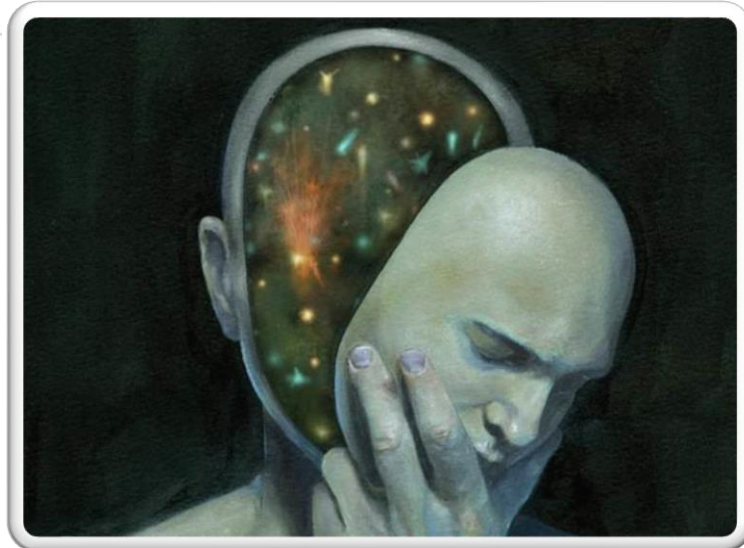
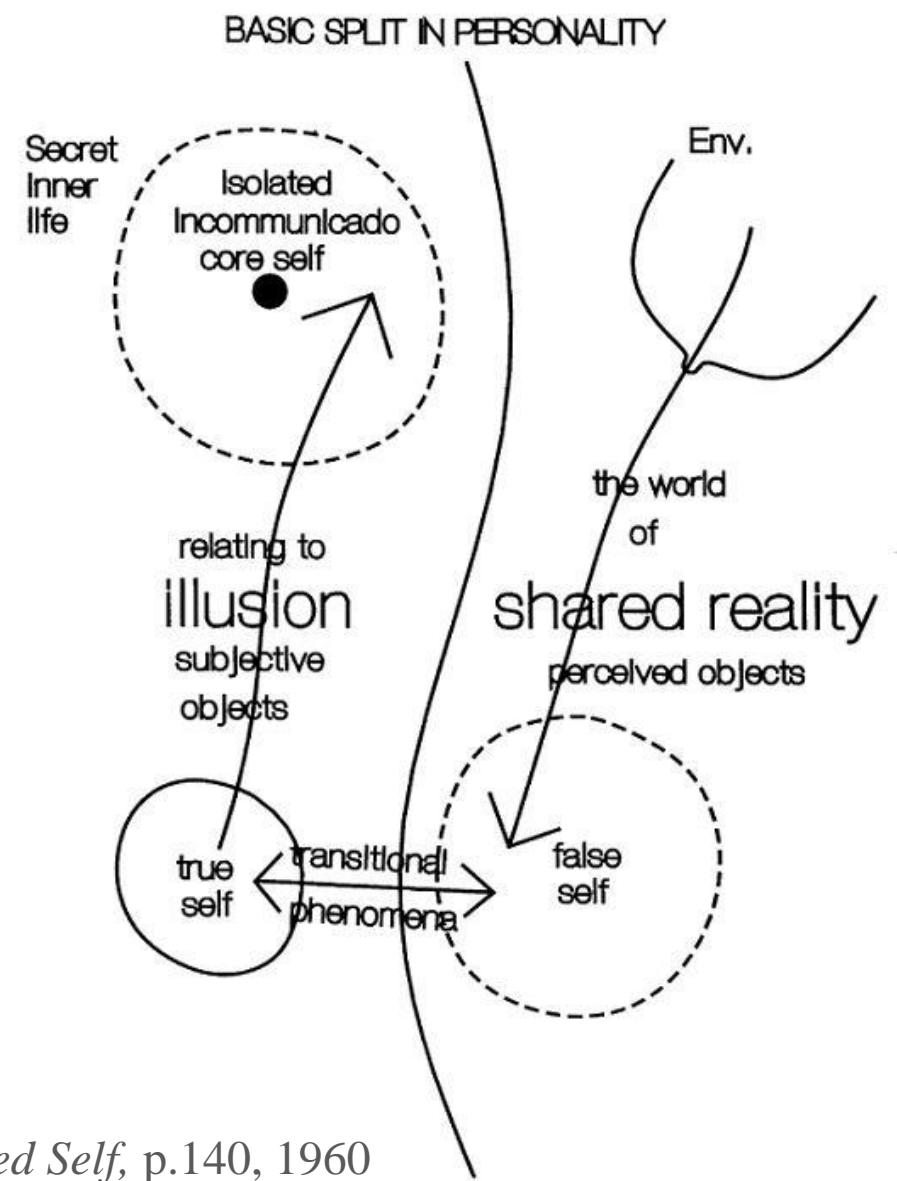


Kohut - nuclear self



The Leelah Play Paradigm

Winnicott - True Self & False Self diagram



Relational psychoanalysis, Multiple Selves Theory

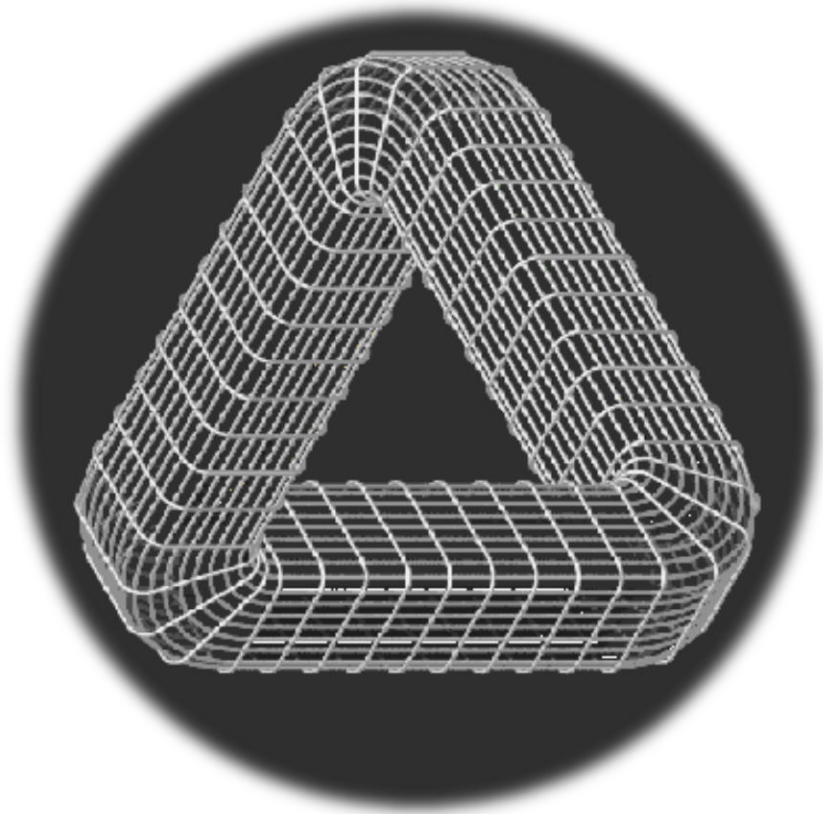
Stephen A. Mitchell, Lewis Aron etc.



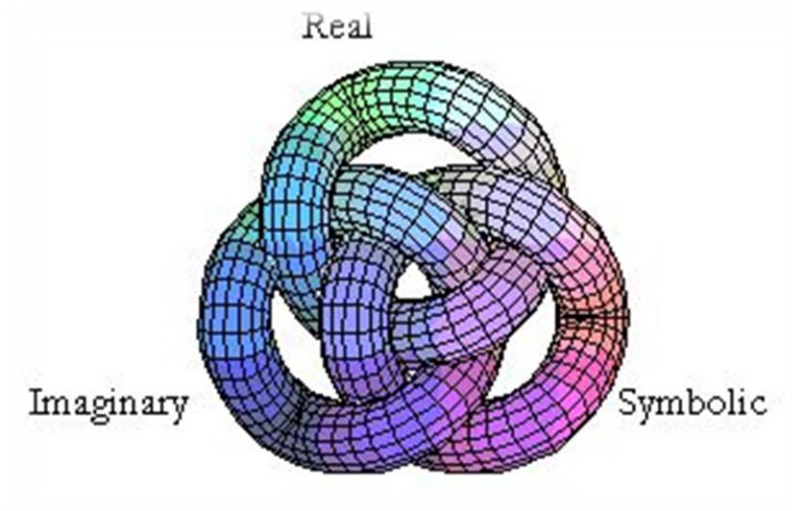
Benjamin, J. (2010). Where's the gap and what's the difference? The relational view of intersubjectivity, multiple selves, and enactments. *Contemporary Psychoanalysis*, 46(1), 112-119.

Jacques Lacan's application of topology to psychoanalysis

Mobius strips



Borromean rings, the three Orders The structure of the psyche



The Jung's model of the psyche, expressed in the form of a mandala

Ego: the sum total of the part of ourselves that we are conscious of. At the outer edge, is a kind of mask that allows us to interface with the outside world, our persona.

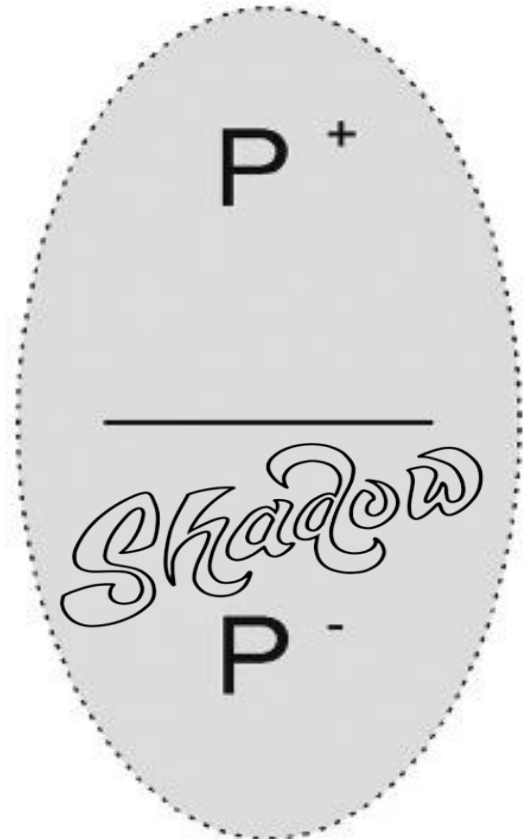
Shadow: the parts of ourselves that we are unconscious of. The opposite of the persona, the animus/anima, the soul of the self, a contrasexual psychic elements.

the goal of the psyche is to be whole. We are all on a quest to achieve 'individuation', where the conscious and unconscious sides of the same self are in harmony.

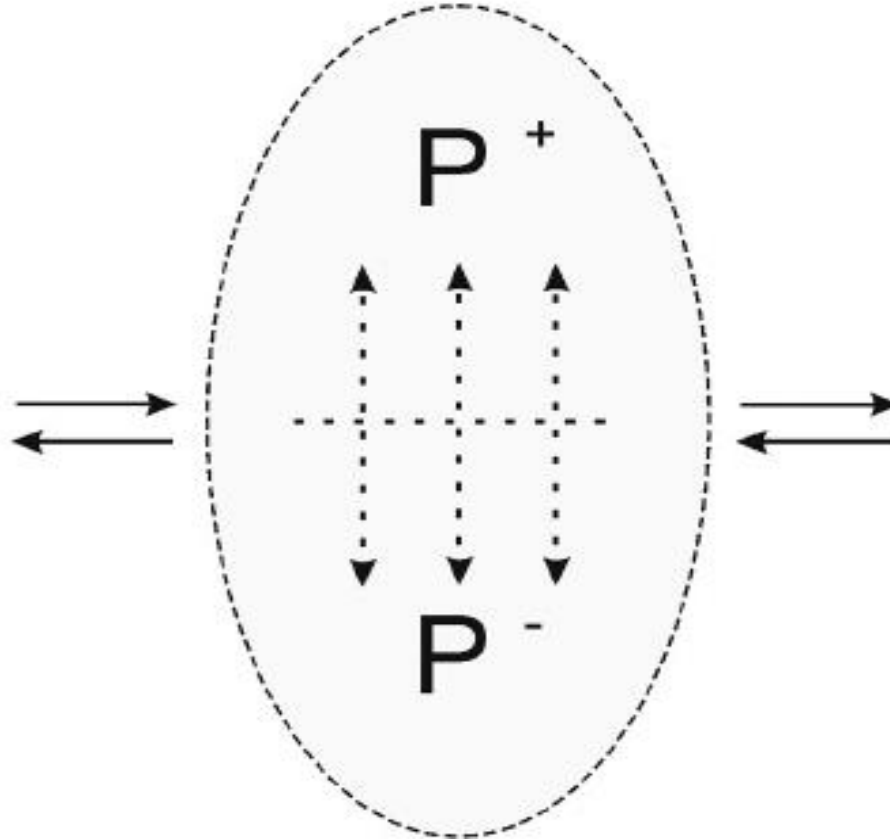


Klein VS Jung

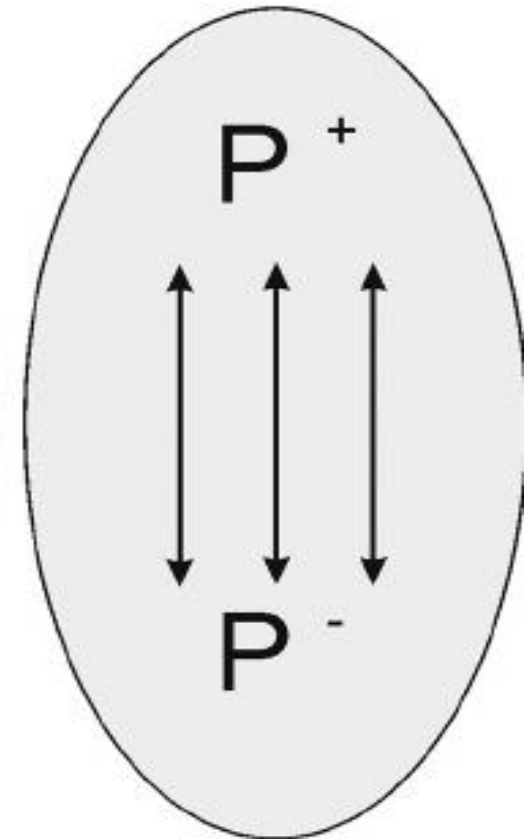
A Paranoid-schizoid position

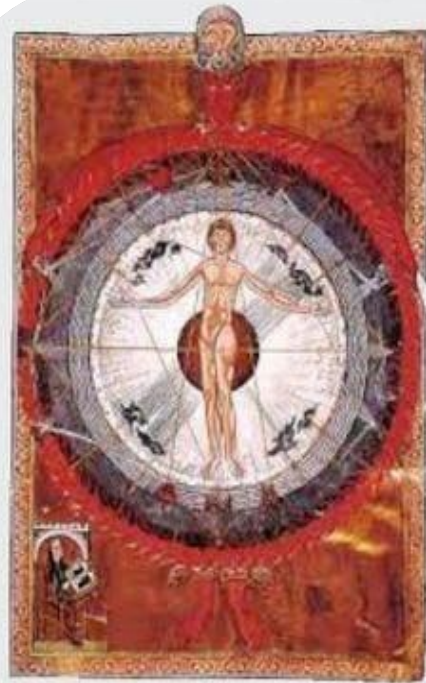


B Transition to depressive position



C Depressive position





www.jungcurrents.com
Image: Hlifegard of Bingen

“The mandala's basic motif is the premonition of a center of personality, a kind of central point within the psyche, to which everything is related, by which everything is arranged, and which is itself a source of energy.”

C.G. Jung

“I began to understand that the goal of psychic development is the self. There is no linear evolution; there is only a circumambulation of the self.”

Memories, Dreams and Reflections

P. 196

Mental spiral structure

How does the circumambulation evolution of the self appear

